



**PREPARATION OF A LAND USE MANAGEMENT PLAN FOR THE SELECTED GRAMA  
NILADHARI DIVISIONS ON THE BOUNDARY OF LUNUGAMVEHERA NATIONAL PARK**

# **Prioritization and Identification of Hot spots Rapid Assessment Report**



**PRODUCED AND PUBLISHED BY:**

**LAND USE POLICY PLANNING DEPARTMENT  
DISTRICT LAND USE PLANNING OFFICE  
HAMBANTOTA.**

**SUPPORTED BY:**

**FEDERATION OF ENVIRONMENTAL ORGANIZATIONS (FEO)**

**NOVEMBER 2022**

## Content

List of abbreviations	4
1. Introduction	5
2. Objectives	6
3. Study area	6
4. Data Used	9
5. Methodology	9
6. Results	14
7. Comments and suggestions submitted by the community to develop Lunugamwehera National Park and surrounding area	41
Conclusion	44

### Figures

3.1. Map showing Lunugamwehera National Park and Selected G.N.Divisions	8
6.1. Present Status of Electric Fences	15
6.2. Proposed areas for Grasslands	20
6.3. Land Use Map of Selected G.N.Divisions	22
6.4. Unused/Underutilized Lands	26
6.5. Present status of Irrigation network	28
6.6. Environmental Sensitive areas/Protected areas	33
6.7. Location Map of different issues	35
6.8. Priority ranking of selected G. Divisions	39

### Tables

3.1. Grama Niladhari Divisions surround the Lunugamwehera National Park covered under the Rapid Assessment	7
5.1. Criteria for the implementation of the Rapid Assessment, the assessment method of the relevant criteria and the weightage	11
6.1. Status of Human-elephant conflict (During Past 02 years)	14
6.2. Availability of Electric Fences to protect the village	16
6.3. Intensity of crop damage by other animals	17
6.4. Intensity of Land degradation	17
6.5. Present Status of Animal Husbandry	18
6.6. Present Land Use	23
6.7. Commercial Cultivation	25

6.8.	Unused and Underutilized Lands	27
6.9.	Present Status of Irrigation Network	29
6.10.	Important Socio-economic data	31
6.11.	Prioritization of Grama Niladari Divisions according to selected criteria	36

### Annexes

Annex 01 -	Photos of the discussions with the community and officers	46
Annex 02 -	Photos of the places with different issues	47
Annex 03 -	Photos of Field observations conducted with Head office officials of LUPPD	49
Annex 04 -	Team Members	50

## **List of abbreviations**

DS	Divisional Secretariat
DWC	Department of Wildlife Conservation
EPA	Environmental Protected Areas
ESA	Environmental Sensitive Areas
FD	Forest Department
GIS	Geographical Information Systems
GN	Grama Niladhari
GND	Grama Niladhari Division
LUPPD	Land Use Policy Planning Department

## **1. Introduction**

Sri Lanka has one of the highest rates of biological endemism in the world. Currently there are 26 National Parks and 61 Sanctuaries inhabited by flora and fauna. Out of the 26 National Parks in Sri Lanka, 03 are located in Hambantota District namely Yala, Bundala and Lunugamwehera National Parks. In terms of the land area, the second place belongs to Lunugamwehera National Park. The total extent of park is 23,498 ha. A significant area of the park is occupied by the Lunugamwehera Reservoir. Thus the total dry area of the park is 20,156.8 ha. The National Park falls within the Divisional Secretary Divisions of Thanamalwila, Wellawaya, Kataragama and Buttala in Moneragla District and Lunugamwehera Divisional Secretary Division of Hambantota District.

Lunugamwehera National Park was declared in 1995, with the intention of protecting the catchment area of the Lunugamwehera Reservoir and wildlife of the area. The National Park is an important habitat for water birds and elephants. The catchment area is vital to maintain the water levels of the five tanks in the downstream of Kirindi Oya and wetland characteristics of Bundala National Park. This National Park also serves as a corridor for elephants to migrate between Yala National Park and Udawalawa National Park.

Various Land Use issues have arisen within this National Park, its buffer zone and nearby areas. Among them human-elephant conflict, poaching inside and outside of the National Park, cattle grazing inside the National Park, Forest degradation, Land degradation and deforestation due to agriculture (Chena and Commercial level cultivars) and other developments are the main issues. In order to solve these issues, it is an urgent need to prepare a Land Use Management Plan for this area with the participation of the community, officials and all other stakeholders.

Before preparing the Land Use Management Plan, it is necessary to identify and prioritize the issues in the Grama Niladhari Divisions bordering the National Park. For this, 09 Grama Niladhari Divisions have been selected from Hambantota District and another 13 from Moneragala District. Among them, a Rapid Assessment to prioritize the most problematic Grama Niladhari Divisions was carried out in the year 2022. The details related to the Rapid Assessment are presented in this report.

In this activity, the technical contribution is given by the Land Use Policy Planning Department and the financial contribution is given by the Federation of Environmental Organizations (FEO) which is a civil society organization that works collaboratively towards conserving Sri Lanka's environment.

By conducting this Rapid Assessment, which is the basis of the Land Use Management Plan, the functions such as conserving biodiversity and natural resources and uplifting the wellbeing of surrounding communities of the area through sustainable development performed by the plan will be more effective.

## **2. Objectives**

Undertake a Rapid Assessment of the selected Grama Niladhari Divisions in the buffer zone of the Lunugamwehera National Park:

1. to identify the major challenges facing
2. to identify the geographical location of the hotspots
3. to identify preliminary solutions with relevant stakeholders.

## **3. Study Area**

The study area is the buffer zone of the Lunugamwehera National Park and selected 09 Grama Niladhari Divisions that falls within the Lunugamwehera Divisional Secretary Division, bordering the Park. The coordinate location of the area is considered to be between 6.428027-6.344067 North Latitudes and 81.131289-81.226546 East Longitudes.

Out of the 09 Grama Niladhari Divisions selected, 03 namely Weheragala, Punchiappujandura and Weeravilara are located outside the boundaries of the National Park, Bogahawewa, Padavgama and Lunugamwehera Town are located within the parts of the Park, and the others Ranavarana, Devramwehera and Seenimunna are located on the border of the Park.

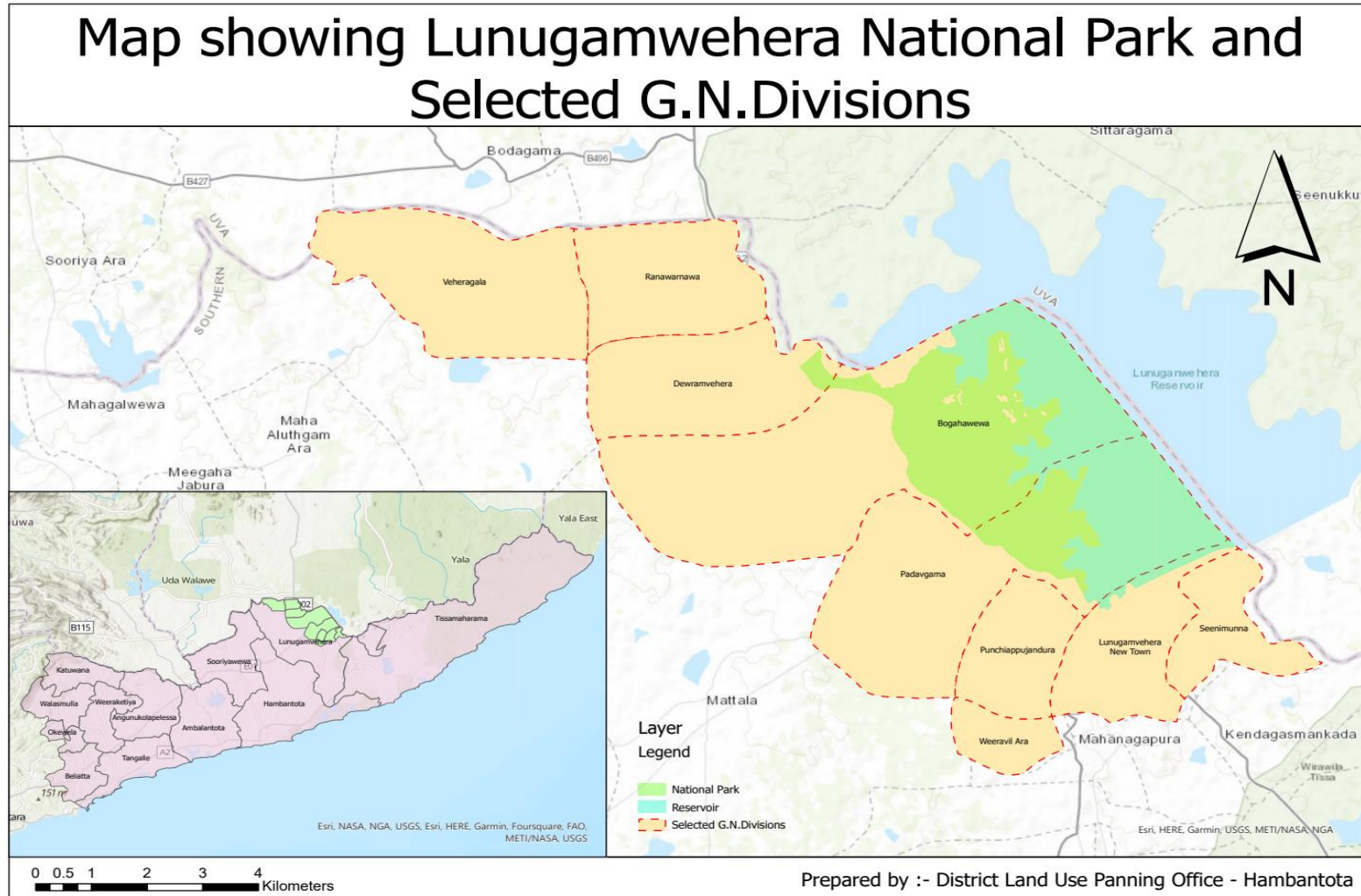
The list of Grama Niladhari Divisions that surround the National Park, including the extent of land that falls both within and outside of the National Park boundary, can be found below (Table 3.1.). Map of the study area has also been included (Figure 3.1.).

Table 3.1: Grama Niladari Divisions surround the Lunugamwehera National Park covered under the Rapid Assessment

Grama Niladhari Division	Area in Sq.km			
	Inside Park		Outside Park	Total
	Land	Water (Reservoir)		
1.Weheragala	-	-	10.56	10.56
2.Weerawilara	-	-	1.97	1.97
3.Padawgama	2.64	5.54	9.97	18.15
4.Punchiappujandura	-	-	4.38	4.38
5.Dewramwehera	0.57	0.04	7.41	8.02
6.Bogahawewa	7.81	5.04	13.20	26.05
7.Ranawaranawa	0.10	0.02	6.71	6.83
8.Lunugamwehera New Town	0.04	0.50	5.10	5.64
9.Seenimunna	-	-	3.72	3.72
<b>Total</b>	<b>11.16</b>	<b>11.14</b>	<b>63.02</b>	<b>85.32</b>

According to the table 3.1 above, the total area of land belonging to 09 GNDs selected for Rapid Assessment is 85.32 square kilometers(8532 hectares).73.8% of that area i.e. 63.02 square kilometers(6302 hectares) is located outside the National Park boundary.26.2% i.e. 22.30 square kilometers(2230 hectares ) come under the National Park. Of this, 11.16 square kilometers (1116 hectares) are land, and the remaining 11.14 square kilometers (1114 hectares) are the Lunugamwehera Reservoir and its waterways.

Figure 3.1: Map showing Lunugamwehera National Park and Selected G.N.Divisions



Climate of the study area is classified as tropical. The average annual temperature is 27.0°C. Precipitation here is about 1244 mm per year. Lowest precipitation is in July, with an average of 23 mm. Most precipitation falls in November, with an average of 267 mm. Between the driest and wettest months, the difference in precipitation is 244 mm. The average temperatures vary during the year by 2.7 °C.

#### **4. Data Used**

In this Rapid Assessment primary and secondary data have to be collected together. In the collection of primary data, the support of village officials, representatives of farmer organizations, Cattle-owning farmer associations and the elders and youth activists who know very well about their respective Grama Niladhari Divisions was obtained. For this, separate discussions were held in the selected 09 Grama Niladhari Divisions and it was done by going to the field with them on the same day and observing and getting the location coordinates of the respective places with different issues.

Secondary data includes data extracted from different maps prepared by the Survey Department and Land Use maps prepared by the Land Use Policy Planning Department, data obtained from records and maps owned by the Departments of Wildlife Conservation and Forest Conservation, data obtained from records owned by the Department of Animal Production and Health, data obtained by the District Statistics Division. Also, the data obtained from the relevant files in the Lunugamwehera Divisional Secretariat were used.

#### **5. Methodology**

The methodology carried out for this Rapid Assessment is given under the following steps.

1. Preliminary discussion between the relevant officials of the Land Use Policy Planning Department and the officials of the Federation of Environmental Organizations (FEO).
2. Preparation of the criteria for the implementation of the Rapid Assessment, the assessment method of the relevant criteria and the weightage chart for each criterion (Relevant notes are given below by Table 5.1.)

3. Briefing the Hambantota District Secretary, Lungamwehera Divisional Secretary, Assistant Director (Wildlife)-Southern Region, Divisional Forest Officer, Deputy Director (Animal Production and Health Department, Southern Province) and Park Warden of Lungamwehera National Park about the Project on Rapid Assessment both written and verbal.
4. Awareness for the village officials of selected 09 Grama Niladharis and allocation of dates to discuss with the community to get the necessary information and to go to the field to identify the places/areas with issues.
5. Community level discussions with the representatives of farmer organizations, the representatives of Cattle-owning farmer associations and the active elder and youth community in each Grama Niladhari Division to get data and information related to each criteria as well as additional information, ideas and suggestions that can be useful in future planning activities and joined visits to the field with them to record the location coordinates of the relevant areas with issues as well as important field observations.
6. Collection of numerical data from the documents and files and extraction of data from maps of the Southern Regional Office of the Department of Wildlife Conservation, the Lunugamwehera National Park Office, the Beat Wildlife Offices, the Divisional Forest Office, the Lunugamwehera Range Forest Office, the District Office of the Animal Production and Health Department, the Lunugamwehera Veterinary Surgeon's Office, the District Statistics Division and the Lunugamwehera Divisional Secretariat.
7. Analyze, weight and prioritize the data collected as above according to the intensity of the existing issues in the Grama Niladari Divisions.
8. Preparation of maps on the relevant data and information using GIS and data tables using the related data systems, and a detailed report including the comments and suggestions of the community.

Table 5.1: Criteria for the implementation of the Rapid Assessment, the assessment method of the relevant criteria and the weightage

No	Proposed Criteria	Method of Assessment	Description of Weightage
1	Percentage of land extent available in the GND	Extent of GNDs within the 1 km buffer (Extent calculation using GIS)	Value from 1 to 10 depending on the extent of GNDs (0-3 ha = 1/ 3-6 ha = 2 etc.)
2	Percentage of land extent of Lunugamvehera National Park available in the GND	Updated GIS layers (DWC /LUPPD/ Survey Department)	Value from 1 to 5 depending on the extent of GNDs (0-3 ha = 1)
3	Human elephant conflicts occurred during past 2 years within the GNDs	Secondary data from DWC/ DS,Community discussions	
3.1	Number of deaths (During Past 2 years)	Secondary data from DWC/ DS,Community discussions	Deaths = 3 Disabled =2 Injured =1
3.2	Damage to Houses(each Household)	Secondary data from DWC/ DS,Community discussions	Fully damaged = 3 (If 3 houses = 3*3= 9) Half damaged= 2 Minor damaged = 1
3.3	Elephant Fence	Secondary data from DWC/ DS,Community discussions	Already having = 1 Under construction = 2 Proposed fence = 3 None = 4
3.4	Frequency of elephants raid on village (per month)	Secondary data from DWC/ DS,Community discussions	> 5 = 3 4-3= 2 <2 = 1
3.5	Number of elephant deaths (During past 2 years)	Secondary data from DWC/ DS,Community discussions	> 5 = 3 4-3 = 2 <2 = 1
3.6	Percentage of crop damaged land extent due to elephants raid on cultivated lands	Secondary data from DWC/ DS,Community discussions	>2 = 3 2-1= 2 <1 = 1
4	Other animal threats	Secondary data from DS/GN, Community discussions	Peacocks = 1 Monkeys =1 Porcupines =1 Pigs =1
5	Severity/ magnitude of land degradation	Field observation + Community discussion	
5.1	Land degradation due to deforestation	Field observation + Community discussion	High = 3 Moderate =2 Low =1

5.2	Land degradation due to cattle grazing	Field observation + Community discussion	High = 3 Moderate = 2 Low = 1
5.3	Land degradation due to mining (clay, granite, sand etc.)	Field observation + Community discussion	High = 3 Moderate = 2 Low = 1
6	Occurrence of degradation of forest lands	Map Analysis + Discussion with forest and wildlife officers	Value on availability of considered land extent
7	Number of poaching incidences reported in one year	Secondary data from DWC/ DS/GN, Community discussions	>5 = 3 4-3 = 2 <3 = 1
8	Cattle population in the GND	Farmer Organizations + Community discussion + Regional vet. Office + information from dept. of Animal production and health, GN	>500 = 5 500-200 = 4 <200 = 3
9	Occurrence of migrated cattle in the GND for grazing	Discussion with Farmer Organization and community	Available = 2 None = 0
10	Number of families depend on animal husbandry	Community discussion + Regional vet. Office + information from dept. of Animal production and health, GN	Poultry farming = 1 Goat farming = 1 Pigs farming = 1 Other (Specify) = 1
11	Availability of grazing lands in the GND	Community discussions + Discussion with GN and other field officers	Value on availability of considered land extent
12	Availability of land allocated for the grazing purpose	Community discussions + Discussion with Agric instructor and other relevant officers + Map Analysis	Available = 2 None = 0
13	Availability of ESA/EPA areas in the GNDs	Use of GIS layer from the FD/DWC	Complete ESA/EPA = 5 Part of ESA/EPA = 3 None = 0
14	Number of Archaeological sites in the GND	Community discussions + Discussion with relevant officers + secondary data + GN	Available = 2 None = 0
15	Any protective/ conservation measures taken to protect/ conserve buffer zone and their effectiveness	Discussion with DS, Officers of DWC and Community	Value on availability of considered land extent

16	Percentage of land extent of chena in the GND	Community discussions + Discussion with Agric instructor and other relevant officers + Map Analysis	Value on availability of considered land extent
17	Percentage of land extent of commercial cultivation in the GND	Community discussions + Discussion with Agric instructor and other relevant officers + Map Analysis	Value on availability of considered land extent
18	Percentage of extent of underutilized lands	Map analysis using updated land use layer	Value on availability of considered land extent
19	Percentage of extent of unutilized lands	Map analysis using updated land use layer	Value on availability of considered land extent
20	Percentage of land extent of encroachment	Discussion with DS, Officers +GN+ Community Discussion	Value on availability of considered land extent
21	Present status of Tanks(Wewa) available in the GND	Community discussions + Discussion with relevant officers + secondary data +GN + Map Analysis	Working Tank = 1
			Proposed to be rehabilitated = 2
			Abandoned Tank = 3
22	Percentage of surface water bodies available in the GND	Map Analysis (Use GIS layers of updated water bodies)	Value on available percentage of water body
23	Irrigation canals and stream network available in the GND	Calculate the drainage density of the GND	Value on drainage density

## 6. Results

After analyzing the primary and secondary data collected as mentioned in paragraph 4 above, the results obtained are presented in the following tables and maps.

**Table 6.1. Status of Human-elephant conflict (During Past 02 years)**

G.N. Division	Damage to people			Damage to Houses			Damages to other properties (Agricultural machines & instruments)	Damages to crops(land extent(ha))	Frequency of raids per month (days)	Elephant deaths
	Number of deaths	Number of disabled	Number of injured	Fully damaged	Half damaged	Minor damages				
Weheragala	0	0	1	2	3	0	0	30	30	0
Weerawilara	1	0	0	0	0	0	1	63	30	0
Padawgama	0	1	1	1	0	0	0	30	30	1
Punchiappujandura	0	0	0	4 (Temporary Huts)	0	0	0	30	30	0
Dewramwehera	0	0	0	1	0	0	0	46	30	1
Bogahawewa	0	0	0	1	0	0	0	30	30	0
Ranawaranawa	0	0	4	0	0	0	0	70	30	0
Lunugamwehera New Town	0	0	0	0	0	0	0	0	0	0
Seenimunna	0	0	0	0	0	0	0	0	0	0

In general, apart from the 02 GNDs of Lunugamwehera New Town and Seenimunna, in the other 07 GNDs, the wild elephants cause damage almost every day, mostly crop damage is caused during Maha season. Among them, the damage to the cultivated paddy fields is high. Siambalagaswewa, Rekawa and Udawewa paddy fields in Weerawilara GND, coconut nurseries in Dewramwehera GND and Jandura, Ranawaranawa, Nugewewa and Galpiyassa paddy fields in Ranawaranawa GND always damaged. According to the comments made by the community in the Weheragala GND, due to the construction of the Mattala International Airport, the threat of wild elephants has increased.

Due to this, electric fences have been built to reduce the damage caused by wild elephants, and a Managed Elephant Reserve (MER) has also been gazetted. The current status of those electric fences is shown in the Figure 6.1 below and the information related to the electric fences set up to protect each GND is shown in the Table 6.2 below.

Figure 6.1. Present Status of Electric Fences

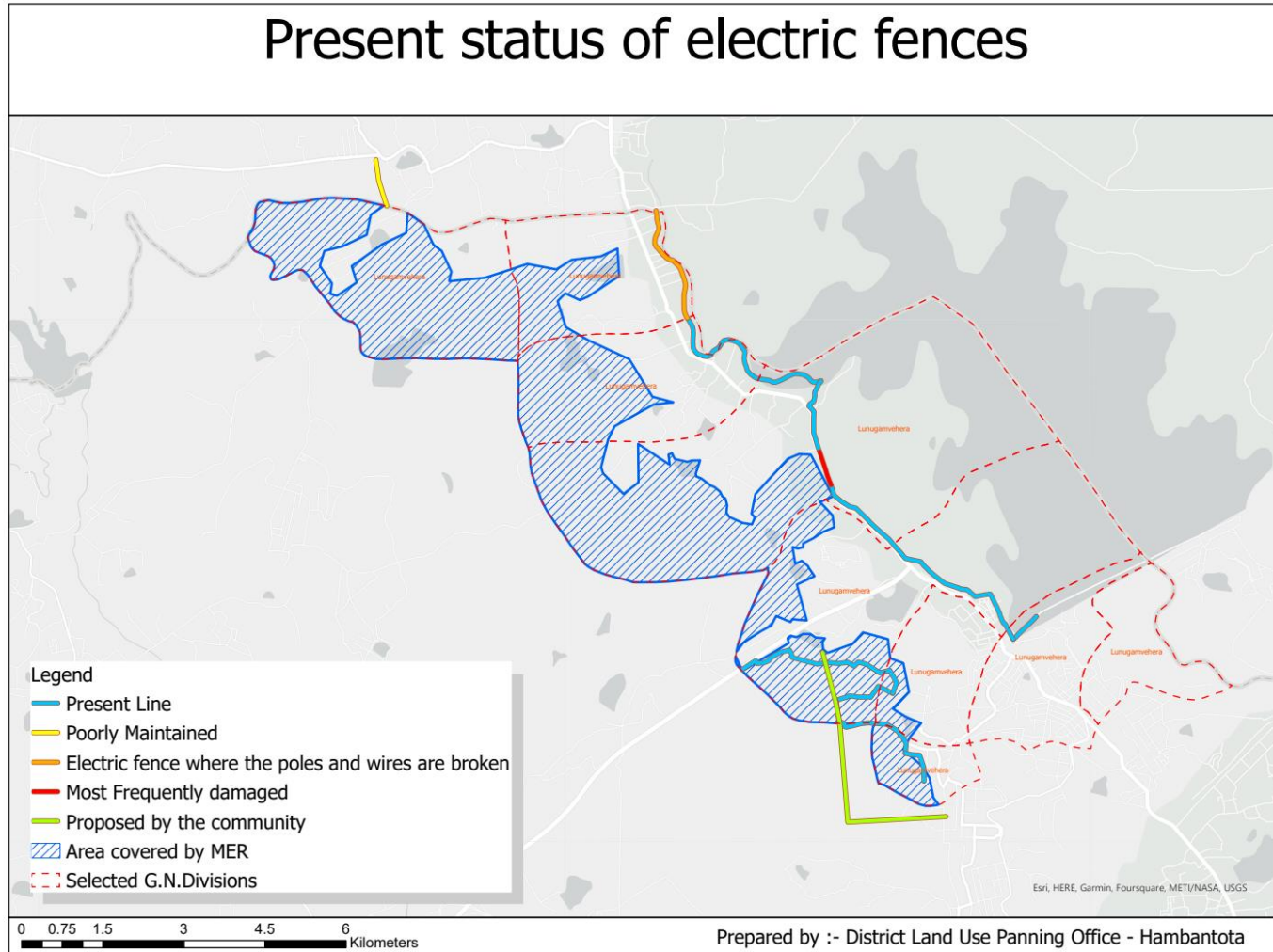


Table 6.2. Availability of Electric Fences to protect the village

G.N .Division	Available	Under construction	Proposed	None	If none suggested electric fence	Special Remarks
Weheragala	X	✓	X	X	X	
Weerawilara	✓*	X	X	X	X	*From Siyambalagaswewa to Udawewa
Padawgama	✓*	X	✓**	X	X	*From Punciappujandura Wewa to padawgama Wewa **From Airport Road to Bogahawewa
Punciappujandura	✓*	X	X	X	X	*From Udawewa to Padawgama
Dewramwehera	✓*	X	X	X	X	*From Angunakolawewa to Mattala(The poles and wires are broken in most places of the electric fence. It is not up to the standard.)
Bogahawewa	✓*	X	X	X	X	*Along the National Park Boundary (Maintenance of the electric fence is a problem)
Ranawaranawa	✓*	X	X	X	X	*Along the National Park Boundary (About 20 years old)
Lunugamwehera New Town	✓*	X	X	X	X	*Along the Lunugamwehera Reservoir embankment
Seenimunna	✓*	X	X	X	X	*Along the Lunugamwehera Reservoir embankment

Except for the Weheragala GND, the other 08 GNDs have electric fences covering the GNDs. The community is of the opinion that the maintenance of some electric fences is not sufficient.

Table 6.3. Intensity of crop damage by other animals

G.N.Division	Peacocks	Monkeys	Porcupines	Pigs	Giant squirrels
Weheragala	100%	75%	25%	50%	X
Weerawilara	100%	75%	X	X	50%
Padawgama	100%	75%	25%	50%	X
Punchiappujandura	100%	75%	X	25%	50%
Dewramwehera	100%	75%	25%	50%	X
Bogahawewa	100%	75%	25%	X	50%
Ranawaranawa	100%	75%	X	X	X
Lunugamwehera New Town	100%	75%	X	X	X
Seenimunna	100%	75%	X	50%	X

In general, many people are of the opinion that the damage done to crops by peacocks is more than the damage caused by elephants. They are of the opinion that monkeys (*Toque macaque-සෛඳා*) cause more damage to houses than to crops.

Table 6.4. Intensity of Land degradation

G.N .Division	Deforestation	Cattle grazing	Mining	Special Remarks
Weheragala	100%*	100%**	X	*Cultivation of the same crop for a long period of time without crop rotation **No grass lands
Weerawilara	100%*	100%**	X	*Chena cultivation during Maha Season **Similar to wild elephant damage, cattle damage also occurs. Damages associated with the Udawewa are high.
Padawgama	100%*	100%**	X	*Chena cultivation during Maha Season **Cattle damages almost every day.
Punchiappujandura	100%*	40%	X	*About 200 acres of land from Uda Wewa to Padavgama Wewa
Dewramwehera	100%*	100%	X	*Chena cultivation during Maha Season
Bogahawewa	100%*	100%	X	*Chena cultivation during Maha Season
Ranawaranawa	100%*	50%	X	*The forest is set on fire for chena cultivation during Maha Season
Lunugamwehera New Town	X	25%	X	
Seenimunna	X	25%*	25%**	*There are cattle sheds adjacent to the spill canal. **There is 01 sand mining place.

In general, apart from Lunugamwehera New Town and Seenimunna , the forest lands owned by the Forest Conservation Department are found in other 07 GNDs, and because those lands are burnt and cleared in the Maha season for Chena cultivation and they often have the same cropping pattern for a long time, land degradation occurs.

Also, out of the 09 selected GNDs, cattle damage is severe in 05 GNDs, and the community is of the opinion that cattle damages are also happening every day, like wild elephants. Water pollution also occurs by maintaining cattle sheds near tanks and canals. They are of the opinion that the main reason for the cattle damages to the crops is the lack of regular grazing lands.

The land degradation caused by mining in these 09 GNDs is minimal, although clay mining is done near some major tanks like Punciappujandura tank, there is no land degradation, so clay is mined for pottery with permits.

Table 6.5. Present Status of Animal Husbandry

G.N .Division	Number of cattle owners			Number of cows	Number of buffaloes	Number of cattle sheds	Grazing inside the National Park	Number of families depend on other types of animal husbandry					
	Not registered	Registered	Total					Poultry farming		Goat farming		Pig farming	
								Families	Number s of chickens and hens	Families	Number of goats	Families	Number of pigs
Weheragala	01	04	05	-	270	05	-	06	126	-	-	-	-
Weerawilara	28	02	30	315	45	07	45	02	38	-	-	-	-
Padawgama	21	07	28	350	480	09	800**	05	30	01	20	04	30
Punchiappujandura	24	04	28	165	255	08	-	-	-	04	200	-	-
Dewramwehera	24	-	24	335	-	06	200	01	182	03	11	-	-
Bogahawewa	27	-	27	123	-	02	100*	02	15	01	07	01	04
Ranawaranawa	18	05	23	294	170	09	85	05	180	-	-	-	-
Lunugamwehera New Town	06	01	07	44	30	01	-	02	38	02	20	-	-
Seenimunna	01	02	03	30	175	04	-	03	24	-	-	-	-

\*- The community in Bogahawewa GND said that 02 cattle owners take their cattle to the National Park almost every day in the morning and return to their cattle sheds in the evening.

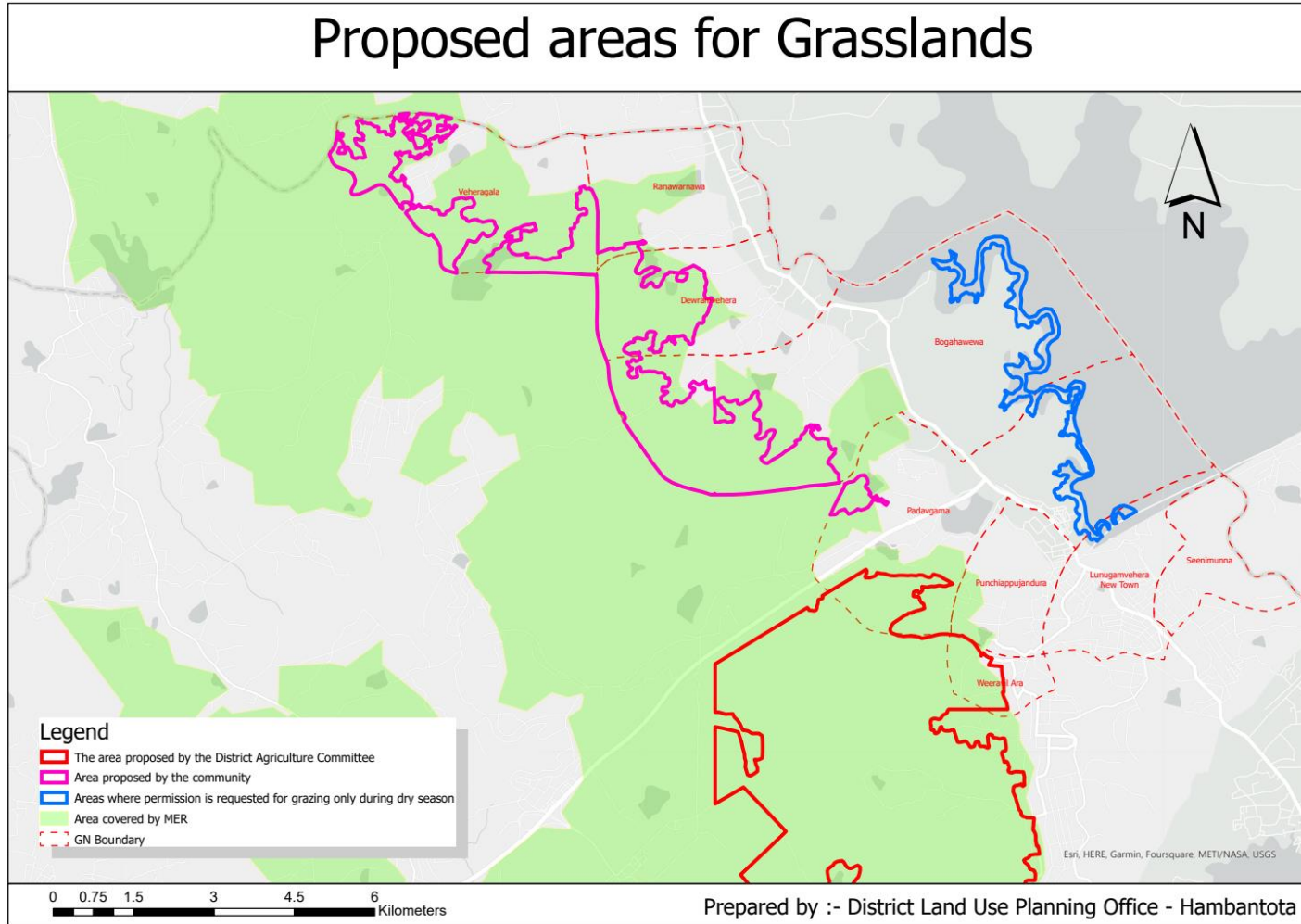
\*\* - The community in Padavgama GND said that every dry season every cattle owner drives their cattle into the National Park to graze.

In obtaining the data and information related to the table 6.5 above, it is not possible to get specific answers from the relevant institutions or in the discussions held with the community in the GNDs. Therefore, the information about the number of cows and buffaloes owned by registered cattle owners is available at the Lunugamwehera Divisional Secretariat and the relevant information about obtained from it. Other data were obtained from the District Statistics Division and the office of the Veterinary Surgeon, Lunugamwehera, and all the other information is based on the facts revealed during discussions with the community.

Although there is a significant amount of registered cattle owners, their cows and buffaloes in these 09 GNDs, there is no land for grazing those animals. According to the demands made by the representatives of the cattle-owning farmer organizations to the Hambantota District Agriculture Committee, the Kadawara Forest, a part of the land owned by the Forest Conservation Department was allocated for this purpose, according to a court decision, it was again assigned to the same Department, and that part now belongs to the gazetted Managed Elephant Reserve (MER). However, in the discussions held with the community in the above GNDs, they suggested that part of the Kadawara Forest again and Malasna Reserve owned by the Forest Conservation Department to be used as a grazing ground. Also, grazing activities are already being done without permission in places where there is no water in the spill area of the Lunugamwehera Reservoir, and a proposal was also made to allow the use of the relevant land only during the dry season. But the Wildlife Conservation Department informed that if so the poaching will increase rapidly. Therefore, there is no agreement for that.

Map of the area related to all the above information is given below by Figure 6.2.

Figure 6.2. Proposed areas for Grasslands



The data related to land use was obtained from the maps updated by the Hambantota District Land Use Planning Office under the National Land Use Survey Program using Geographical Information Systems. The data related to the existing land use is shown in the Figure 6.3.and Table 6.6.

Figure 6.3. Land Use Map of selected GNDs

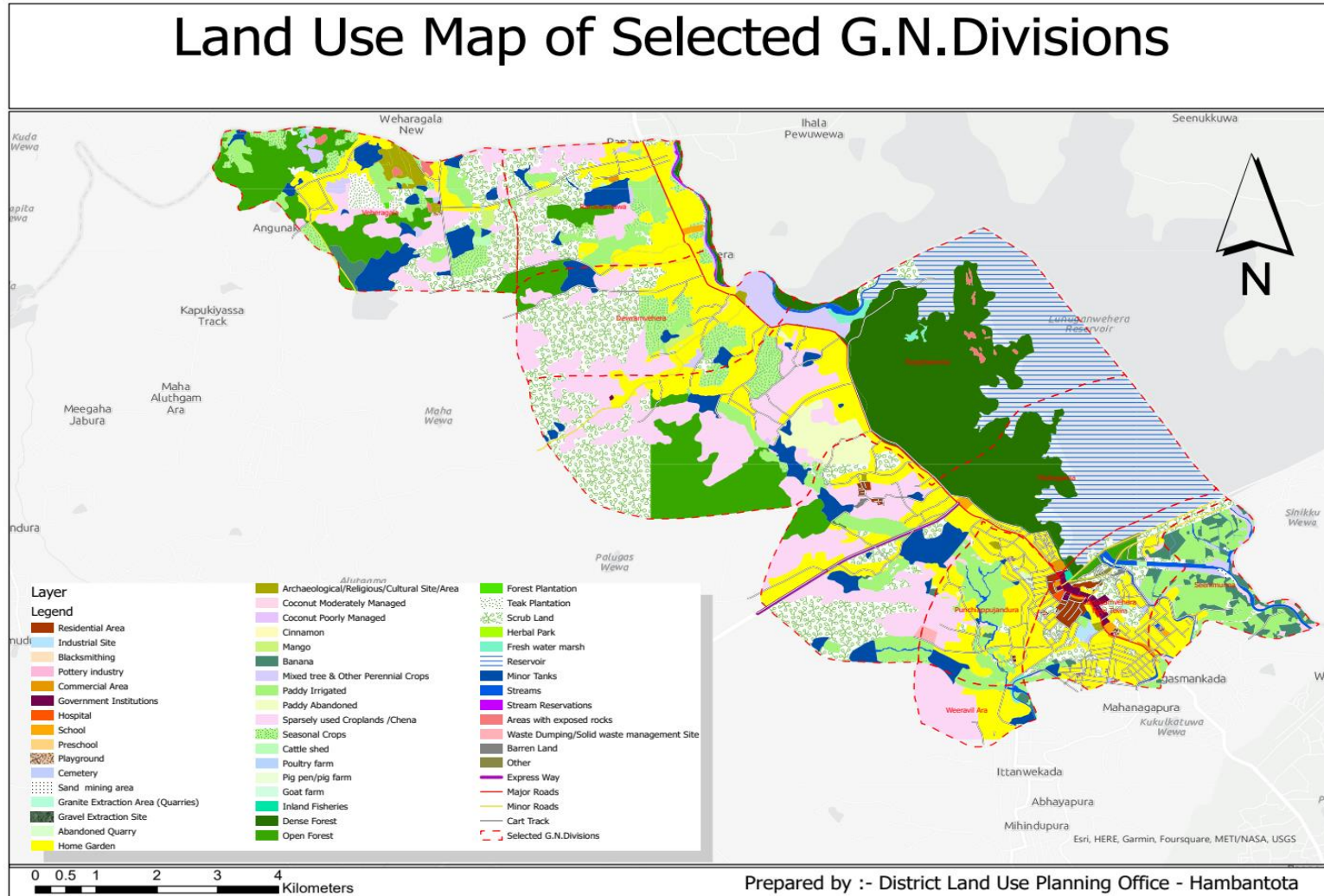


Table 6.6. Present Land Use

Land Use Type	Extent(ha)									Total (ha)	As a% to the total land area
	Weheragala	Weerawilara	Padawgama	Punchiappujandura	Dewramwehera	Bogahawewa	Ranawaranawa	Lunugamwehera New Town	Seenimunna		
Residential Area	-	-	6.04	3.09	-	-	-	24.28	-	33.41	0.39
Industrial Site	-	-	-	-	-	-	-	7.01	-	7.01	0.08
Blacksmith	-	-	-	-	1.45	-	-	-	-	1.45	0.02
Pottery Industry	-	-	-	-	-	-	0.58	-	-	0.58	0.01
Commercial Area	-	-	3.67	0.75	0.07	-	1.74	7.27	-	13.5	0.15
Government Institutions	0.44	0.01	0.38	0.76	0.07	0.56	-	20.79	-	23.01	0.26
Hospital	-	-	-	-	-	-	-	2.52	-	2.52	0.02
School	-	-	4.17	-	-	-	4.08	2.76	1.17	12.18	0.14
Preschool	-	-	-	-	-	-	-	0.13	-	0.13	0.01
Play Ground	0.92	-	-	1.20	-	-	-	4.90	0.88	7.9	0.09
Cemetery	1.12	-	-	0.36	0.17	-	-	3.78	-	5.43	0.06
Sand mining area	-	-	-	-	-	-	-	-	1.89	1.89	0.02
Granite Extraction Area (Quarries)	-	-	-	-	0.14	-	-	1.88	-	2.02	0.02
Gravel Extraction Site	-	-	-	-	-	-	-	0.24	-	0.24	0.01
Abandoned Quarry	-	-	-	2.30	-	-	-	-	-	2.3	0.02
Archaeological/ Religious/Cultural Site/Area	38.14	-	1.22	2.18	2.97	-	0.45	2.38	-	47.34	0.55
Home Gardens	97.94	64.31	223.06	215.03	189.83	224.25	197.59	197.19	55.48	1464.68	18.16
Coconut Moderately Managed	1.34	0.01	3.30	3.71	-	7.38	-	3.71	12.62	32.07	0.37
Coconut Poorly Managed	-	-	-	-	-	0.74	-	-	-	0.74	0.01
Cinnamon	-	-	-	0.96	-	0.94	-	-	-	1.9	0.02
Mango	6.16	-	-	3.07	8.08	0.49	7.89	-	-	25.69	0.29
Banana	17.97	3.58	1.96	1.97	-	-	-	14.93	81.72	122.13	1.43
Mixed tree &	21.90	-	-	-	51.67	28.76	9.68	3.95	18.37	134.33	1.57

Other Perennials											
Paddy Irrigated	81.78	11.29	93.00	114.55	-	28.57	86.31	35.98	142.56	594.04	7.21
Paddy Abandoned	-		32.25	-	-	70.90	-	-	-	103.15	1.20
Sparsely used Croplands /Chena	132.07	104.36	257.40	42.66	-	354.68	86.19	-	-	977.36	12.45
Seasonal Crops	72.65	0.15	4.54	1.02	-	57.49	23.04	2.87	9.19	170.95	2.00
Cattle Shed	6.11	-	-	0.99	0.49	-	0.75	1.55	-	9.89	0.11
Poultry Farm	-	-	-	-	0.10	-	-	-	-	0.1	0.01
Pig farm	-	-	-	-	-	0.23	-	-	-	0.23	0.0
Goat farm	-	-	-	0.41	0.16	-	-	-	-	0.57	0.01
Inland Fisheries	-	-	-	-	-	-	-	1.72	0.10	1.82	0.02
Dense Forest	-	-	263.55	-	-	715.00	10.03	4.05	-	992.63	12.63
Open Forest	253.64	-	34.49	-	-	264.58	43.23	18.56	-	614.5	8.20
Forest Plantation	0.79	-	-	-	-	-	-	-	-	0.79	0.01
Teak Plantation	31.76	-	-	-	-	-	-	-	-	31.76	0.37
Scrub land	170.36	0.56	211.87	9.00	-	272.49	165.35	110.67	23.55	963.85	12.29
Herbal Park	-	-	-	-	-	-	-	-	0.69	0.69	0.01
Fresh water marsh	1.29	1.24	-	1.21	-	13.66	0.01	0.15	-	17.56	0.20
Reservoir	-	-	554.47	-	-	496.87	-	50.61	-	1101.95	13.91
Minor Tanks	110.18	7.05	103.36	17.15	28.58	47.59	38.90	5.13	-	357.94	4.19
Streams	-	4.05	1.81	9.69	-	11.06	3.14	20.47	23.67	73.89	0.86
Stream Reservations	-	-	-	-	-	-	4.42	-	-	4.42	0.05
Areas with exposed rocks	8.78	-	-	-	-	8.76	-	-	-	17.54	0.20
Waste Dumping/Solid waste management Site	0.28	-	1.83	5.85	-	-	-	-	-	7.96	0.09
Barren Land	-	-	1.83	-	-	-	-	1.44	-	3.27	0.03
Other	-	-	10.64	-	-	-	-	12.62	-	23.26	0.27
<b>Total (ha)</b>	<b>1056.00</b>	<b>197.00</b>	<b>1815.00</b>	<b>438.00</b>	<b>802.00</b>	<b>2605.54</b>	<b>683.00</b>	<b>564.00</b>	<b>372.00</b>	<b>8532.54</b>	<b>100.00</b>

By analyzing the above table, it can be seen that the main land uses in the 09 selected GNDs are home gardens, reservoir, dense forests, chena and scrub lands respectively. The area shown here as dense forests belongs to the National park, it appears from the study of Google Maps. The reservoir is the Lunugamwehera Reservoir. In addition to these land uses, open forests, irrigated paddy lands, tanks seasonal crops, mixed crops and banana plantations are also found on a medium scale.

Table 6.7. Commercial Cultivation

G.N .Division	Coconut	Mango	Pomegranate	Banana	Papaya	Vegetables	Teak
Weheragala	✓	✓	-	-	-	✓	✓
Weerawilara	✓	✓	-	-	-	✓	-
Padawgama	✓	-	-	-	-	-	-
Punchiappujandura	✓	✓	-	✓	✓	-	-
Dewramwehera	✓	✓	-	-	-	-	-
Bogahawewa	✓	-	-	-	-	-	-
Ranawaranawa	-	✓	-	-	-	✓	-
Lunugamwehera New Town	-	-	-	-	-	-	-
Seenimunna	-	✓	✓	-	-	-	-

Coconut and mango plantations are more common commercial crops among the GNDs selected. Their plots range from 1-5 acres and Tom EJC variety of mangoes have been cultivated. Such mango plantations are found in Ranawaranawa GND, especially teak and coconut plantations in Weheragala GND are done commercially and their owners are companies like Best Life from outside Lunugamwehera Division, entrepreneurs from Tissamaharama area, and mango and vegetable plantations - the entrepreneurs who come from Thanamalwila area.

The data related to unused and underutilized lands was obtained from the maps updated by the Hambantota District Land Use Planning Office under the National Land Use Survey Program using Geographical Information Systems. The data related to the unused and underutilized lands is shown in the Figure 6.4. and Table 6.8.

Figure 6.4. Unused and Underutilized Lands

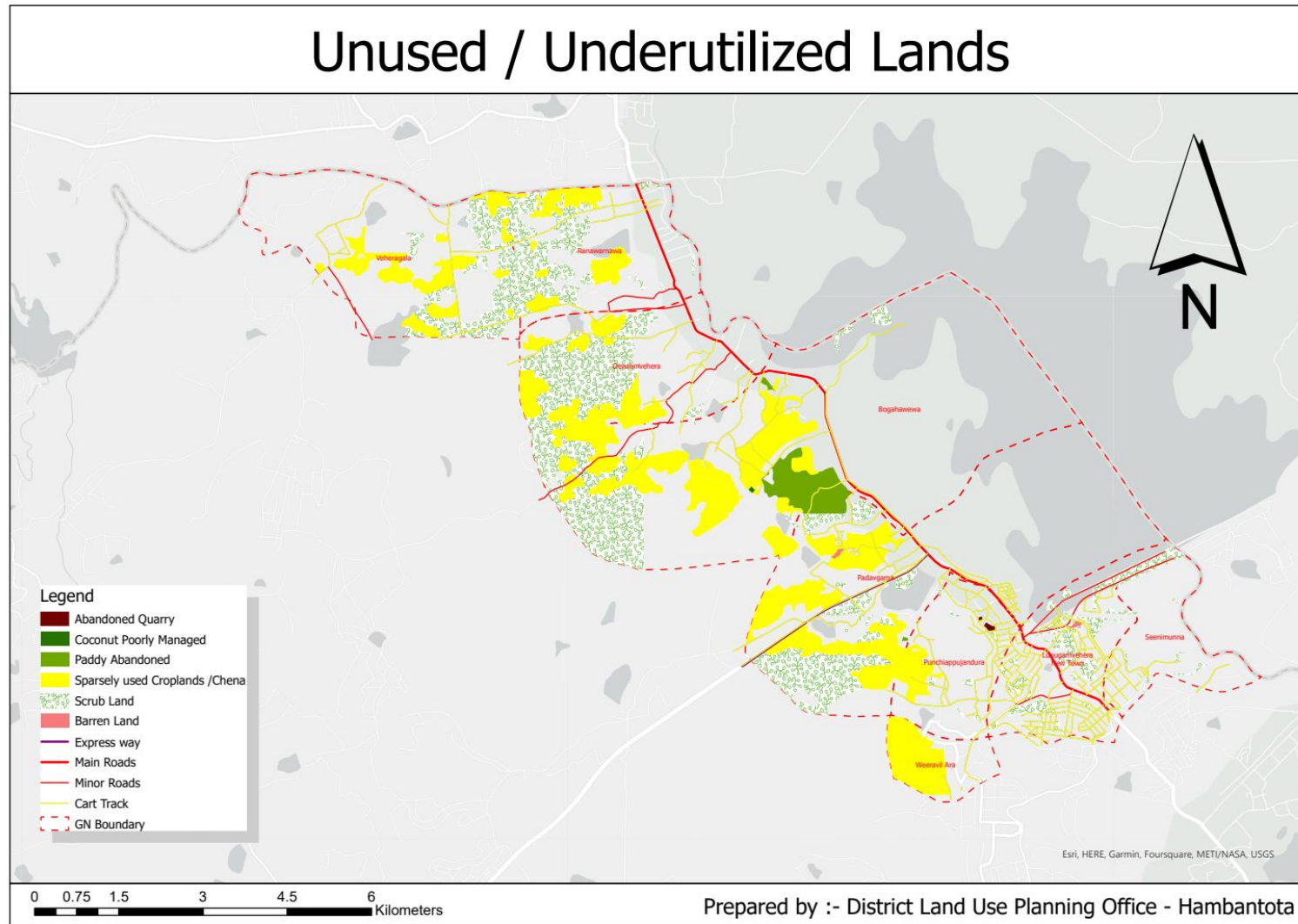


Table 6.8. Unused and Underutilized Lands

G.N .Division	Extent(ha)	
	Unused Lands	Underutilized Lands
Weheragala	170.36	132.07
Weerawilara	0.56	104.36
Padawgama	211.87	291.48
Punchiappujandura	9.00	44.96
Dewramwehera	239.01	132.99
Bogahawewa	272.49	426.32
Ranawaranawa	165.35	86.19
Lunugamwehera New Town	111.67	1.44
Seenimunna	23.55	0.00

According to the table above, the extent of unused and underutilized lands in the GNDs of Bogahewa, Padawgama and Devramwehera is high. Accordingly, there is more potential for development in those 03 GNDs. The extent of unused and underutilized lands in the two GNDs of Seenimunna and Lunugamwehera New Town is low.

The main agricultural uses in the selected 09 GNDs are chena, paddy, seasonal crops, mixed crops and banana plantations. Water is the main factor required for those crops, but if there is no rainwater or irrigation water, they will have to face huge problems. It is very important to study about the present status of the irrigation network. Accordingly, the information about the existing irrigation network is given below in Figure 6.5.and related data are shown in table 6.9 below.

Figure 6.5. Present Status of Irrigation Network

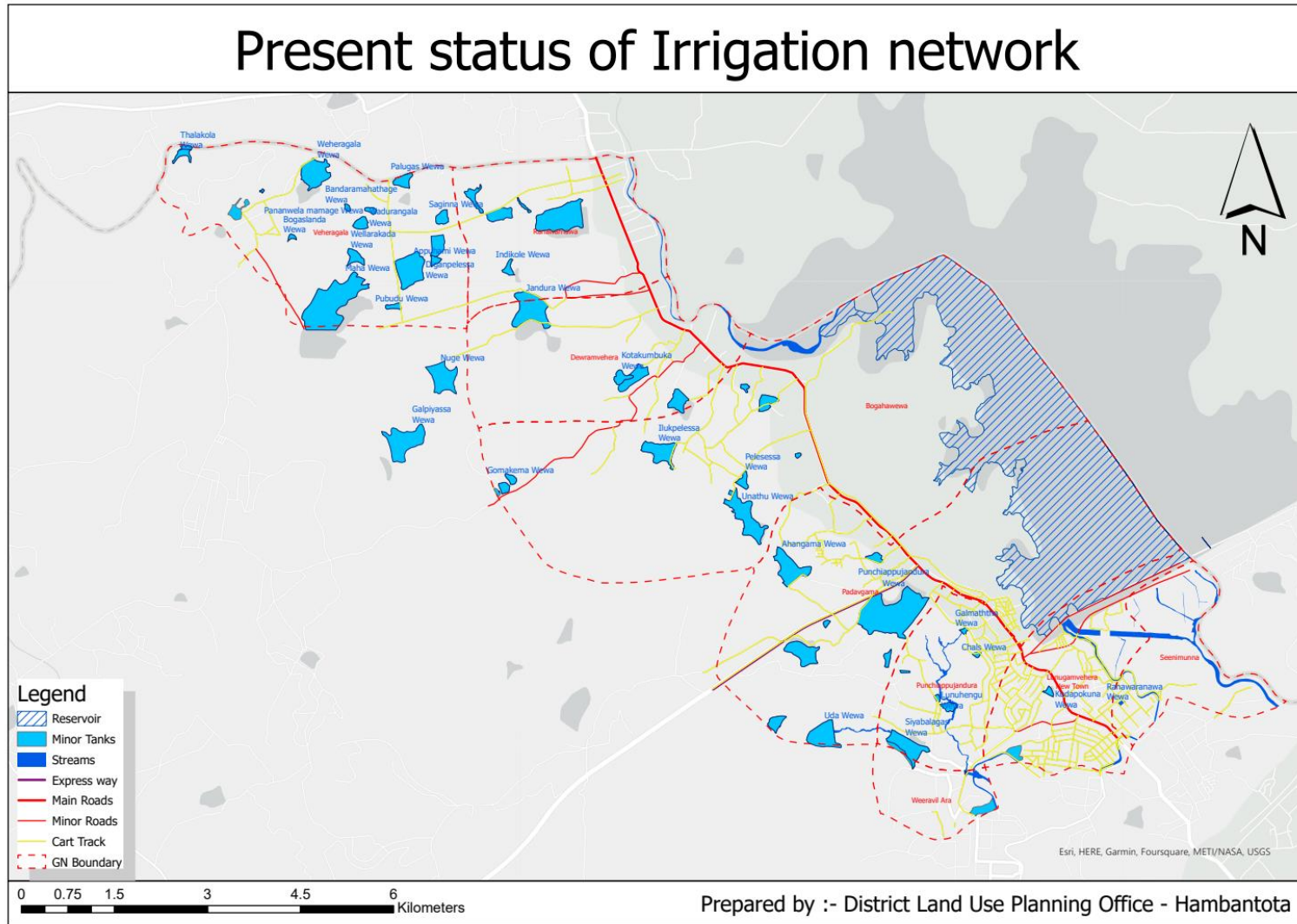


Table 6.9. Present Status of Irrigation Network

G.N.Division	Name of the Tank	Rehabilitated	Not rehabilitated	Proposed for rehabilitation	Length of Streams(km)	Drainage Density (km/ sqkm)
Weheragala	Weheragala Wewa	✓	-	-	18.83	2.28
	Digan Wewa	✓	-	-		
	Palugas Wewa	✓	-	-		
	Pannangala Wewa	-	✓	-		
	Pubudu Wewa	-	✓	-		
	Watte Wewa	-	✓	-		
	Welarakada Wewa	-	✓	-		
Weerawilara	Siyambalagas Wewa	✓	-	-	6.99	4.26
	Uda Wewa	✓	-	-		
Padawgama	Padawgama Wewa	✓	-	-	38.41	2.01
	Karametiya Wewa	-	✓	-		
	Lunuhengugala Wewa	-	✓	-		
	Mahapathaha Wewa	-	-	✓		
	Meda Wewa	-	✓	-		
	Medagamkadawara Wewa	✓	-	-		
	Padahinguru Wewa	-	-	✓		
	Pathahawala	✓	-	-		
	Samurthi Wewa	-	-	✓		
	Thelembugaswala Wewa*	✓	-	-		
	Unathu Wewa*	✓	-	-		
Punchiappujandura	Punchiappujandura Wewa**	✓	-	-	8.88	2.70
	Charles Wewa	✓	-	-		
	Dematawala ***	-	✓	-		
	Galmaththa Wewa	-	✓	-		
	Maila Wewa	✓	-	-		
Dewramwehera	Degaldehera Wewa	✓	-	-	15.74	2.16
	Gomakema Wewa****	✓	-	-		
	Ilupelessa Wewa	✓	-	-		
	Kotakumbuka Wewa	✓	-	-		
	Nuge Wewa	✓	-	-		
Bogahawewa	Ahangama Wewa*****	-	✓	-	47.74	1.87
	Helamba Wewa	✓	-	-		

	<b>Kudadegaldehera Wewa</b>	✓	-	-		
	<b>Pelessa Wewa</b>	✓	-	-		
<b>Ranawaranawa</b>	<b>Ranawaranawa Wewa</b>	✓	-	-	29.37	2.89
	<b>Appuhamy Wewa*****</b>	-	-	-		
	<b>Galpiyassa Wewa</b>	✓	-	-		
	<b>Indikola Wewa</b>	✓	-	-		
	<b>Jandura Wewa</b>	✓	-	-		
	<b>Nuge Wewa</b>	✓	-	-		
<b>Lunugamwehera New Town</b>	<b>Kudapokuna Wewa</b>	✓	-	-	4.28	1.03
<b>Seenimunna</b>	<b>No Tanks</b>				12.22	1.68

\* Thelembugaswala Wewa and Unathu Wewa are private tanks.

\*\*The Punchiappujadura Wewa is located in the Punchiappujadura GND and the paddy fields in the Padavgama GND are fed by that tank, and the community of the Punchiappujadura GND has no use for farming.

\*\*\*Dematawala is a small tank located in the Kadawara Forest Reserve (Managed Elephant Reserve (MER)).

\*\*\*\*Gomakema Wewa is also located within the MER.

\*\*\*\*\*There is no road to the paddy lands coming under Ahangama Wewa.

\*\*\*\*\*Appuhamy Wewa is located in Ranawaranawa GND and the paddy fields located in Weheragala GND are fed by that tank, and the community of Ranawaranawa GND has no use of this tank for cultivation purposes.

Apart from the Seenimunna GND, there are tanks and canals connected to each other in the other 08 GNDs. Padavgama GND has the highest number of tanks. Most of these tanks have been rehabilitated under the Climate Smart Irrigated Agriculture Project (CSIAP), a World Bank project covering the hotspots of Hambantota, Lunugamwehera and Tissamaharama Divisions and some are not rehabilitated. As shown in the above table, the tanks come under cascade systems have been selected to be renovated under the CSIAP.

## 6.10. Important Socio-economic data

G.N.Division	Total Population	Number of families	Number of Samurdhi recipient families	Major sources of income	Other types of income sources	Number of persons engaged in Tourism	Number of persons benefiting from the National park	Special remarks
Weheragala	369	93	68	Chena cultivation	-	-	-	-
Weerawilara	343	79	54	Chena cultivation	-	-	-	-
Padawgama	1780	412	262	1.Chena cultivation 2.Freshwater Fisheries (Lunugamwe hera Reservoir)	-	-	-	-
Punchiappujandura	1036	248	110	1.Chena cultivation 2.Freshwater Fisheries (Lunugamwe hera Reservoir) 3.Hired work	-	01-Safari Jeep Owner	*	*If there is no park,the dairy industry will be lost.
Dewramwehera	1293	326	200	Chena cultivation	1.Freshwater Fisheries 2.Pottery	-	-	-
Bogahawewa	791	196	158	Chena cultivation	Brick making	-	-	-
Ranawaranawa	1623	380	216	Chena cultivation	-	02	**03	**Food and accommodation facilities
Lunugamwehera New Town	2521	630	25	1.Government employee 2.Farming outside the GND 3.Freshwater Fisheries (Lunugamwe hera Reservoir)	-	04-Accommodation for tourists(local)	-	-
Seenimunna	1275	288	83	Freshwater Fisheries (Lunugamwe hera Reservoir)	Coconut related products	-	-	-

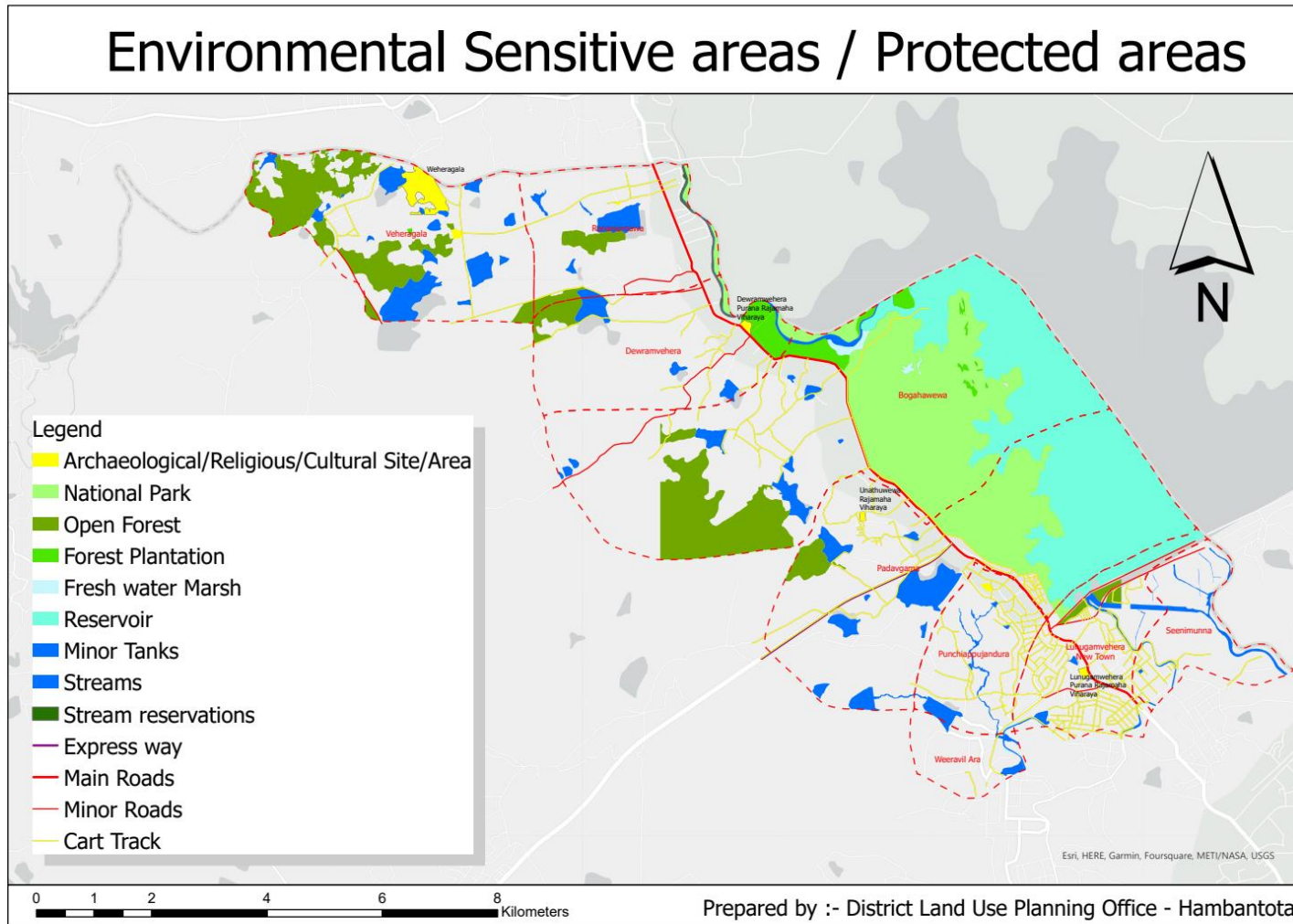
For the data and information required for the above table, the data of the District Statistics Division, the data and information obtained in the discussions with the village officials and the community has to be used. According to that, the main sources of income are chena cultivation, fresh water fishing in Lunugamwehera Reservoir and hired work, and most people are engaged in government jobs in the Lunugamwehera New Town.

As far as industries are concerned, small-scale pottery industry, brick industry and various products related to coconut can be mentioned. Out of all the selected, there are 07 people engaged in Tourism Industry and 06 of them are small-scale entrepreneurs who provide food and accommodation facilities.

Because of the lack of publicity given to the Lunugamwehera National Park, a small number of local tourists come to visit it, but the arrival of foreign tourists is less. Therefore, there are very few people like 03 who benefit from this park by providing food and lodging facilities for those who visit the park. But some cattle owners say that they are getting benefits. It is by making their cows grazing in the Park. They believe that without the park, their dairy industry will also be undermined.

As well as all the above points, it is very important to pay attention to the Environmentally Sensitive and Environmentally Protected Areas of the Lunugamwehera National Park and the related GNDs. Accordingly, the identified information is given in Figure 6.6. below.

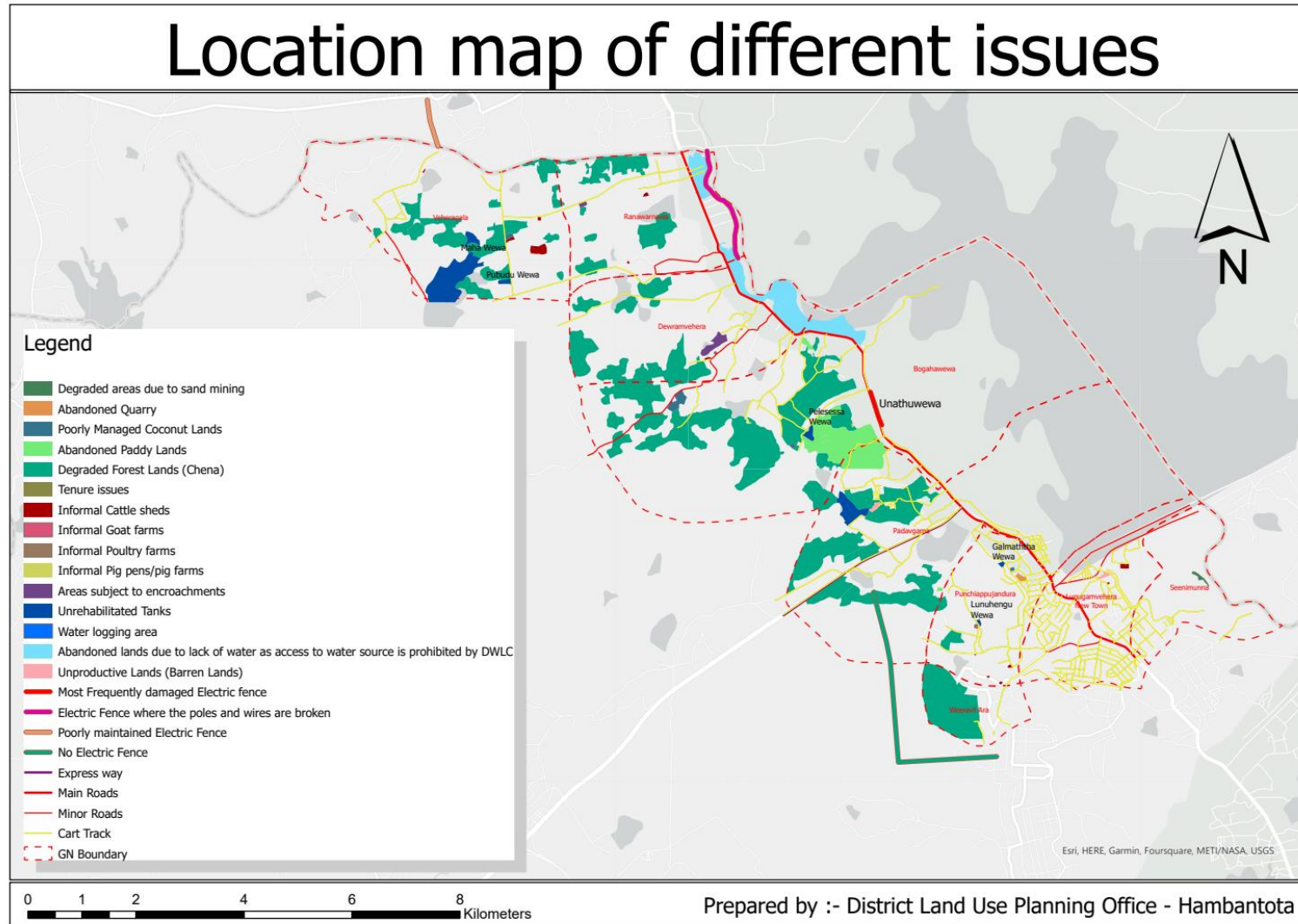
Figure 6.6. Environmental Sensitive Areas /Protected Areas



Spatial and numerical data related to forests, marshes, reservoir, tanks and streams are given in this report through maps and data related to Land Use. Most of the Religious and Cultural important sites are found in these selected GNDs. From the most important Archaeological Sites, only 04 can be specifically identified. They are Weheragala, Devramwehera Rajamaha Viharaya, Unathuwewa Rajamaha Viharaya and Lunugamwehera Rajamaha Viharaya.

Finally, by including all the above points in the Rapid Assessment, it was possible to prepare a map showing the locations of the various issues identified in the field, which is shown in Figure 6.7. below. But this information should be studied in more detail in preparing a Land Use Management Plan for this area.

Figure 6.7. Location Map of Different Issues



Accordingly, all the criteria, additional data and information focused on in the preparation of this Rapid Assessment report were analyzed, a weighting was done, and the GNDs were prioritized according to the sum of those values. The related calculations are shown in Table 6.11 below. Meanwhile, all the GNDs were classified into 03 main categories of High, Medium and Low according to priority and a map was prepared as shown in Figure 6.8. below.

Table 6.11. Prioritization of Grama Niladari Divisions according to selected criteria

	Criteria	Name of G.N.Division and weights given for each criteria								
		Weheragala	Weerawilara	Padawgama	Punchiappujandura	Dewramwehera	Bogahawewa	Ranawaranawa	Lunugamwehera New Town	Seenimunna
1	Percentage of land extent available in the GND	4	1	7	2	3	10	3	2	2
2	Percentage of land extent of Lunugamwehera National Park available in the GND	0	0	3	0	1	5	1	1	0
3	Human elephant conflicts occurred during past 2 years within the GNDs									
3.1	Number of deaths (During Past 2 years)	0	3	0	0	0	0	0	0	0
	Number of disabled (During Past 2 years)	0	0	2	0	0	0	0	0	0
	Number of injured (During Past 2 years)	1	0	1	0	0	0	4	0	0
3.2	Damage to Houses(each Household)Fully Damaged	6	0	3	12	3	3	0	0	0
	Half damaged	6	0	0	0	0	0	0	0	0
	Minor damages	0	0	0	0	0	0	0	0	0
3.3	Elephant Fence-Already having	0	1	1	1	1	1	1	1	1
	Under Construction	2	0	0	0	0	0	0	0	0
	Proposed Fence	0	0	3	0	0	0	0	0	0
	None	0	0	0	0	0	0	0	0	0
3.4	Frequency of elephants raid on village (per month)>5	3	3	3	3	3	3	3	0	0
	4-3	0	0	0	0	0	0	0	0	0
	<2	0	0	0	0	0	0	0	0	0
3.5	Number of elephant deaths (During past 2 years) >5	0	0	0	0	0	0	0	0	0
	4-3	0	0	0	0	0	0	0	0	0
	<2	0	1	0	1	0	0	0	0	0
3.6	Percentage of crop damaged land extent due to elephants raid on cultivated lands>2	0	3	0	0	0	0	3	0	0

	Criteria	Name of G.N.Division and weights given for each criteria								
	4	2-1	2	0	2	2	2	2	0	0
<1		0	0	0	0	0	0	0	0	0
Other animal threats-Peacocks		1	1	1	1	1	1	1	1	1
Monkeys		1	1	1	1	1	1	1	1	1
Porcupines		1	0	1	1	1	0	0	0	0
Pigs		1	1	1	1	1	1	0	0	1
5	<b>Severity/ magnitude of land degradation</b>									
5.1	Land degradation due to deforestation-High	3	3	3	3	3	3	3	0	0
	Moderate	0	0	0	0	0	0	0	0	0
	Low	0	0	0	0	0	0	0	0	0
5.2	Land degradation due to cattle grazing-High	3	3	3	0	3	3	0	0	0
	Moderate	0	0	0	2	0	0	2	0	0
	Low	0	0	0	0	0	0	0	1	1
5.3	Land degradation due to mining (clay,granite,sand etc.) High	0	0	0	0	0	0	0	0	0
	Moderate	0	0	0	0	0	0	0	0	0
	Low	0	0	0	0	0	0	0	0	1
6	Occurrence of degradation of forest lands	3	3	3	3	3	3	3	0	0
7	Number of poaching incidences reported in one year>5	0	0	0	0	0	0	0	0	0
	4-3	0	0	0	0	0	0	0	0	0
	<3	0	0	0	0	0	0	0	0	0
8	Cattle population in the GND>500	0	0	5	0	0	0	0	0	0
	500-200	4	4	0	4	4	0	4	0	4
	<200	0	0	0	0	0	3	0	3	0
9	Occurrence of migrated cattle in the GND for grazing-Available	0	2	0	2	2	0	0	0	0
	None	0	0	0	0	0	0	0	0	0
10	Number of families depend on animal husbandry-Poultry farming	1	1	1	1	1	1	1	1	1
	Goat farming	0	0	1	0	1	1	0	1	0
	Pig farming	0	0	1	0	0	1	0	0	0
	Other	0	0	0	0	0	0	0	0	0
11	Availability of grazing lands in the GND	0	0	0	0	0	0	0	0	0
12	Availability of land allocated for the grazing purpose-Available	0	0	0	0	0	0	0	0	0
	None	0	0	0	0	0	0	0	0	0
13	Availability of ESA/EPA areas in the GNDs	5	0	5	0	5	5	5	5	0

Criteria		Name of G.N.Division and weights given for each criteria								
14	-Complete ESA/EPA									
	Part of ESA/EPA	0	3	0	3	0	0	0	0	3
	None	0	0	0	0	0	0	0	0	0
	Number of Archaeological sites in the GND-Available	2	0	2	0	2	0	0	2	0
	None	0	0	0	0	0	0	0	0	0
15	Any protective/ conservation measures taken to protect/conservate buffer zone and their effectiveness	2	1	4	1	1	1	1	1	1
16	Percentage of land extent of chena in the GND	2	2	4	1	0	5	2	0	0
17	Percentage of land extent of commercial cultivation in the GND	4	3	1	4	2	1	2	0	2
18	Percentage of extent of underutilized lands	2	2	3	1	2	5	1	1	0
19	Percentage of extent of unutilized lands	4	1	4	1	5	5	4	3	1
20	Percentage of land extent of encroachment	2	2	4	1	0	5	2	0	0
21	Present status of Tanks(Wewa) available in the GND-Working Tank	3	2	5	3	5	3	5	1	0
	Proposed to be rehabilitated	0	0	6	0	0	0	0	0	0
	Abandoned tank	12	0	9	6	0	3	0	0	0
22	Percentage of surface water bodies available in the GND	1	1	4	1	1	3	1	1	1
23	Irrigation canals and stream network available in the GND	2	3	2	2	2	1	2	1	1
	<b>Total value</b>	<b>83</b>	<b>51</b>	<b>99</b>	<b>64</b>	<b>59</b>	<b>79</b>	<b>55</b>	<b>27</b>	<b>22</b>
	<b>Priority ranking</b>	<b>High</b>	<b>Medium</b>	<b>High</b>	<b>Medium</b>	<b>Medium</b>	<b>High</b>	<b>Medium</b>	<b>Low</b>	<b>Low</b>

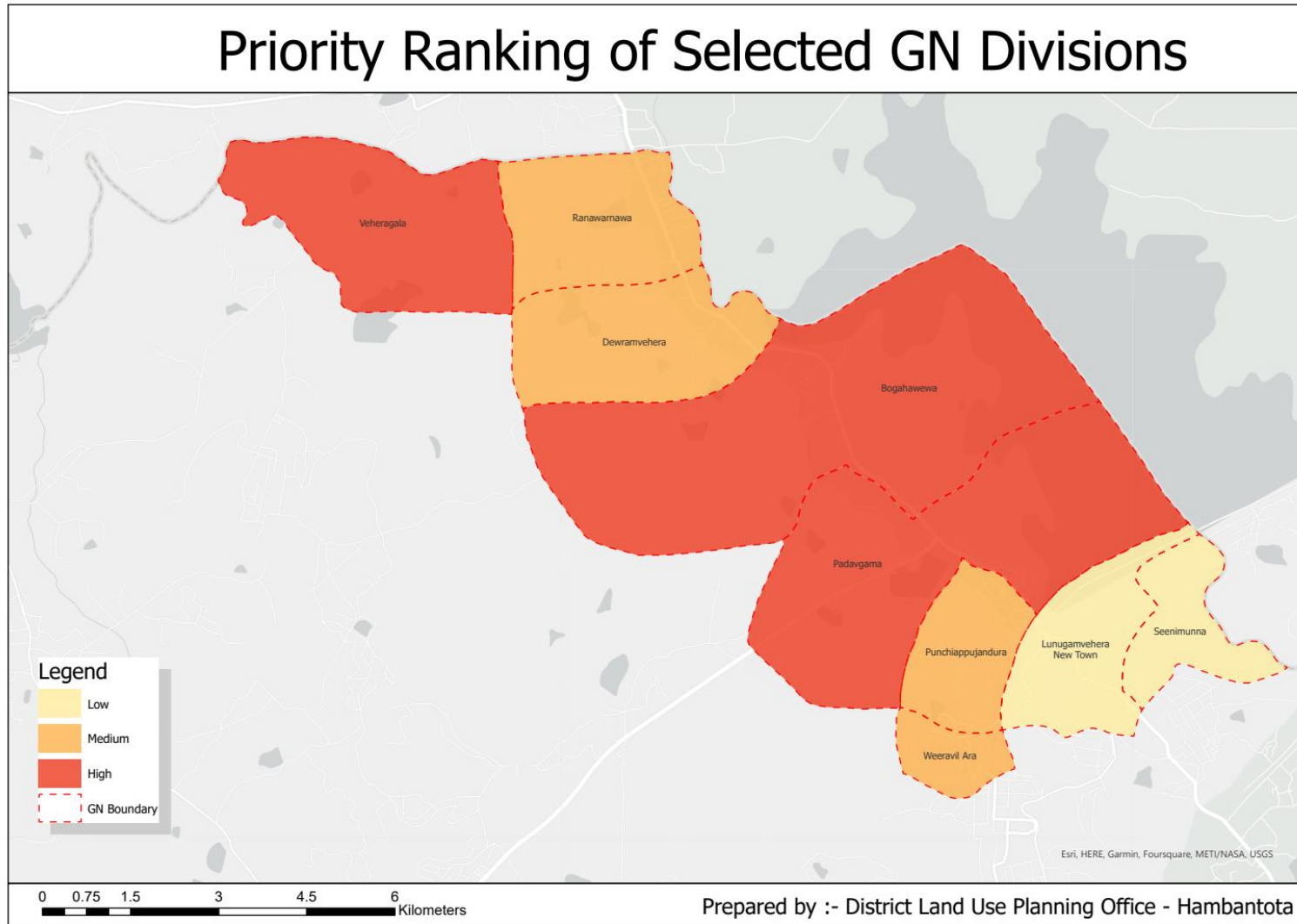
According to the above table, the total value of weightings ranged from 22-99. Accordingly, the selected GNDs were ranked into 03 main categories namely High, Medium and Low.

0-33 Low

34-66 Medium

67-100 High

Figure 6.8. Priority ranking of selected GNDs



Accordingly, the GNDs of Padavgama, Weheragala and Bogahawewa were assessed as High priority GNDs, Punciappujadura, Devramwehera, Ranavaranawa and Weeravilara GNDs as Medium priority GNDs, and Lunugamwehera New Town and Seenimunna GNDs as Low priority GNDs.

## **7. Comments and suggestions submitted by the community to develop Lunugamwehera National Park and surrounding area**

In order to obtain the necessary information and data in conducting this rapid assessment, discussions with the rural representatives of all GNDs were held separately in each GND. Various ideas and suggestions for the development of the National Park and its surrounding area were presented there. Those ideas and suggestions are given below and they can be basically used for the Land Use Management Plan to be prepared in the future. But those ideas and suggestions should be studied separately in detail.

### **Water and other infrastructure Sector:**

1. Uma Oya Project Extension-This is the most successful solution to the problems related to water, which is a major need in the area.
2. Establishing a Lift Irrigation System for Bogahawewa GND.
3. Establishment of Nelumpokuna Wewa Lift Irrigation System for Ranavaranava GND.
4. Rehabilitation of remaining abandoned tanks in the area.
5. Renovation of Weerapelassa Wewa and Gunaratne Wewa in Bogahawewa GND
6. Repairing dilapidated roads and establishing public transport services on internal roads as well.
7. Construction of adequate buildings for the schools specially Padawgama School
8. Provision of quarters with security, water and electricity for teachers coming from distant areas to work in the schools in the respective area.

### **Agriculture Sector:**

9. Conduct awareness programs to local farmers to get practical knowledge about modern farming methods apart from traditional farming methods.
10. Encouraging the people to carry out Cinnamon, Tom EJC Mango Plantations, and Drumstick Plantations etc.
11. Encourage the crop cultivation like Tumba and Passion Fruit.

12. Establish Processing Industries of fruits such as Mango, Divul, Tamarind and Banana which are very common and available in large quantities in the area.

**Animal Husbandry Sector:**

13. Establishment of grasslands in the area of Kadawara, Malasna or the adjoining area of Lunugamwehera Reservoir as proposed by the community.

**Tourism Sector:**

14. Prepare a program to attract local and foreign tourists by giving wide publicity about Lunugamwehera National Park.
15. Allocating reserved areas on both sides of Mattala Expressway from 22 Junction and allocating plots for small-scale entrepreneurs according to needs.
16. Establishment of essential services for the tourism industry as appropriate on the road reserve on the main road from Lunugamwehera Town to the National Park.
17. Giving a new look to various businesses on both sides of the road from Lunugamwehera town to the National Park.
18. Development of tourism based on village culture.
19. Awareness of the youth and entrepreneurs of the area about the various opportunities in the tourism sector.
20. Improvement of tourist attractions like Weheragala, Telambugala and Mahawewa etc.
21. Setting up a suitable program for the development of the tourism industry around the pond in Diyawara village (setting up a park, setting up a jogging track)

**Wildlife and Forestry Sector:**

22. Setting up a suitable work plan to protect the Unathuwewa Electric Fence which is frequently damaged by wild elephants and maintaining all the Electric Fences regularly.
23. Avoiding burning the large scale trees in chena cultivation

**Other:**

24. Inclusion of GNDs of Uda Mattala and Pahala Mattala in the preparation of the Land Use Management Plan.

It is important to study the above suggestions in detail and prioritize them and implement ideas and suggestions that can be implemented quickly, and pay special attention to the above matters in the future Land Use Management Plan.

## Conclusion

- The wild elephants cause damage almost every day, mostly crop damage is caused during Maha season. Among them, the damage to the cultivated paddy fields is high.
- The maintenance of electric fences is not sufficient.
- The damage done to crops by peacocks is similar to the damage caused by elephants.
- The forest lands owned by the Forest Conservation Department are burnt and cleared in the Maha season for Chena cultivation and they often have the same cropping pattern for a long time, land degradation occurs highly.
- The main reason for the cattle damages to the crops is the lack of regular grazing lands.
- The major land uses in the 09 selected GNDs are home gardens, reservoir, dense forests, chena and scrub lands respectively. Most of the dense forests belong to the National park, and a large area is covered by the Lunugamwehera Reservoir. In addition to these land uses, open forests, irrigated paddy lands, tanks seasonal crops, mixed crops and banana plantations are also found on a medium scale.
- Most of the commercial plantations in the area are owned by the outsiders of Lunugamwehera Division and entrepreneurs from Tissamaharama and Thanamalwila areas.
- The extent of unused and underutilized lands in the GNDs of Bogahewa, Padawgama and Devramwehera is high. Accordingly, there is more potential for development in those 03 GNDs.
- Despite the rehabilitation of the tanks, agricultural activities have been hampered due to lack of sufficient rains during the Maha season for a long time.
- The main sources of income in the area are chena cultivation, fresh water fishing in Lunugamwehera Reservoir and hired work, and most people are engaged in government jobs in the Lunugamwehera New Town.
- As far as industries are concerned, small-scale pottery industry, brick industry and various products related to coconut can be mentioned. Out of all the selected, there are 07 people engaged in Tourism Industry and 06 of them are small-scale entrepreneurs who provide food and accommodation facilities.
- It can be concluded that no matter how much cattle breeding and other animal husbandry are done, they are done informally

- Because of the lack of publicity given to the Lunugamwehera National Park, a small number of local tourists come to visit it, but the arrival of foreign tourists is less. Therefore, there are very few people like 03 who benefit from this park by providing food and lodging facilities for those who visit the park. But some cattle owners say that they are getting benefits. It is by making their cows grazing in the Park. They believe that without the park, their dairy industry will also be undermined.
- Accordingly, the GNDs of Padavgama, Weheragala and Bogahawewa were assessed as High priority GNDs, Punciappujadura, Devramwehera, Ranavaranawa and Weeravilara GNDs as Medium priority GNDs, and Lunugamwehera New Town and Seenimunna GNDs as Low priority GNDs.
- Out of the 09 selected GNDs, there are quite a lot of issues in the 04 GNDs classified as medium also, so special attention should be paid to 07 out of the 09 selected GNDs in the preparation of the Land Use Management Plan.

## Annexes 01 - Photos of the discussions with the community and officers

Weerawilara



Padawgama



Punchiappujandura



Dewramwehera



Bogahawewa



Ranawaranawa



## Annexes 02 - Photos of the places with different issues

Forest lands that are being degraded due to land clearing for chena cultivation



Land preparation for chena cultivation inside the electric fence



Chena where watermelons are grown



Commercial level banana plantation near the Punciappujadura Wewa



## Nature of cattle sheds



Cattle grazing on the grounds of the Lunugamwehera Reservoir within the National Park



A herd of goats met during field observation



**Annexes 03 - Photos of Field observations conducted with Head office officials of LUPPD**

Introduction to the field



Observation of an informally constructed electric fence



Visit to a land cleared for chena cultivation during Maha season



#### **Annexes 04 - Team members**

01. Conducting field work, coordinating all activities and technical advising -

Ms. Ruchira Wickramaratne, Assistant Director (District Land Use), Hambantota

02. Field activities- Mr.H.G.U.Keerthiratne, Land Use Planning Officer, District Office

Ms.Mallika Wickramage, Land Use Planning Officer, Lunugamwehera

03. Computerization of data and information-

Ms. Ruchira Wickramaratne, Assistant Director (District Land Use), Hambantota

04. Data and Information Analysis-

Ms. Ruchira Wickramaratne, Assistant Director (District Land Use), Hambantota

05. Mapping –

Mr.H.G.U.Keerthiratne, Land Use Planning Officer, District Office